

5nine Migrator

Version 1.0

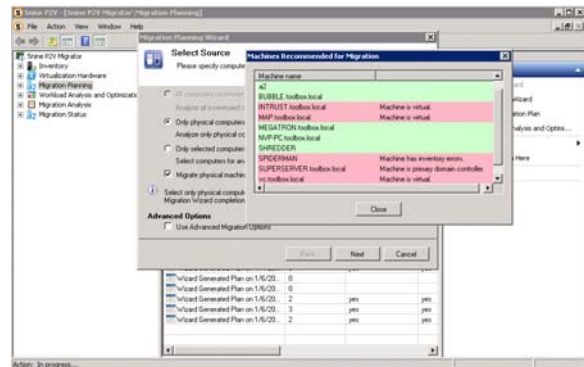
5nine Migrator uniquely combines P2V, V2V Migration and Capacity Planning, Automated P2V Conversion and ongoing Workload Optimization for Enterprise and SMB Hyper-V deployment projects. Simply run 5nine Migration Wizards to perform Optimal Virtualization of your Data Center with the best TCO and ROI ratios!

5nine Migrator is a virtualization migration solution specifically designed for Microsoft Enterprise and SMB Hyper-V deployment projects. 5nine Migrator automatically discovers all the elements of your data center and collects information about existing hardware and its utilization, as well as application workloads. It then performs sophisticated analysis of the data collected in order to present you with several migration plans optimized according to business requirements, costs, ROI, current or additional required hardware. You can then execute these migration plans, automatically provisioning virtual machines, and perform P2V migration of the eligible physical machines onto Hyper-V hosts selected by the plan. 5nine Migrator uses comprehensive knowledge Base to advise System administrators on what actions to perform if certain physical machines failed automatic migration.

Automated P2V Migration

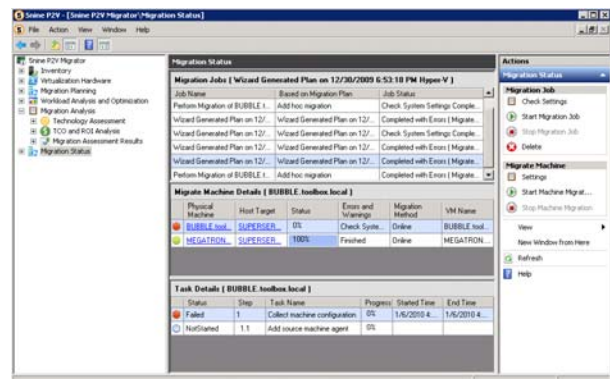
Performs sophisticated analysis of the current data center and provides multiple migration plans depending on particular enterprise requirements that can be automatically executed to perform P2V and V2V Migrations to maximize utilization ratios and TCO/ROI criteria. Performs automatic P2V migration of the selected eligible servers.

- Automatic creation of Optimal Migration Plans
- Automated execution of Hyper-V Migration Plans
- Automated Optimization of Virtual Environment workloads
- Integrated What-if Analysis and TCO/ROI reporting
- Integration with Microsoft SCVMM



Simple-to-Use

The product was designed to be used for projects of all sizes, from small virtualization pilot or SMB projects, - to large Enterprise projects with hundreds of servers, hosts and virtual machines (VMs). Non-intrusive, simple installation – requires only minutes to deploy and start using the product. In addition, the intuitive wizard-driven interface requires minimal training for the data center administrators and managers.



Agentless Data Collection

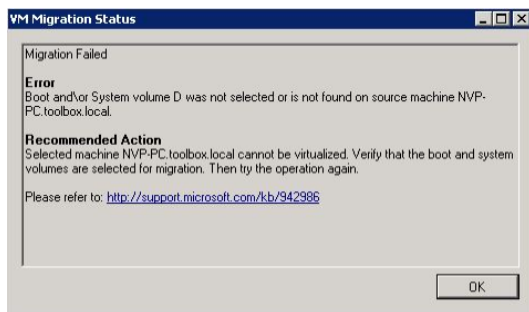
Automatically discovers and collects hardware inventory, utilization data and application performance metrics in a non-intrusive manner without installing agents. It also allows importing this information from an Excel or XML files.

Automatic provisioning of virtual machines

Automatically provisions virtual machines that are used for migration; all parameters of such virtual machines are calculated as part of the migration plans.

Hardware pre-processing Performs analysis of the physical machines, and identifies factors preventing successful migration and suggests corrective actions utilizing comprehensive built-in Knowledge Base. It helps to increase the rate of successful P2V conversions.

Automated P2V Migration Jobs Processing and Migration Helpers When performing actual migration of physical machines - alerts system administrator of the actions to be taken to complete successful migration in case physical machine was not migrated automatically (e.g. offline migration instead of online, installing required Service Packs or modifying the software/drivers installed, etc.



Comprehensive TCO/ROI and Trend Reporting

P2V Migrator creates a variety of TCO/ROI as well as technology assessment and workload reports for each Migration Plan: Migration Results Report, Hardware Consolidation Report, various TCO/ROI reports, Workload/Utilization Report, Data Center Power Consumption

Savings Report, and Data Center Space Savings Report, Data Center Administration and Provisioning reports, Data Center Storage report, Hyper-V/VMware Plans Comparison Report, VI Costs report, Resource Trend reports.

Ongoing Data Center Optimization

Whether your P2V migration project is complete or ongoing, 5nine Migrator (which includes all of 5nine Optimizer functionality) continues to provide the value by optimizing workloads and resource utilization in a virtualized data center. It also enables P2V and V2V Optimization plans that will eliminate both of your bottlenecks or hosts under- utilization.

System Requirements

- Windows domain or workgroup (unless all data will be imported from a file or entered manually) with admin account;
- 1 GB+ of RAM (512 MB minimum, 8GBs + recommended) and 1-2 GB of free HDD (5 GB + for 10,000 or more machines). 1.5 GHz + CPU. Machine should be on the domain or IP network for automated discovery/inventory;
- XP Pro SP3, Vista SP1 (Business, Enterprise or Ultimate editions), Win 2003 R2 SP2, Win 2008, Win7 or later;
- .NET 3.5 or higher;
- Recommended SQL 2005 or 2008 standard or enterprise, SQL 2005 Express edition (or higher); MS SQL installation is recommended for large-size inventories.

5nine P2V Planner setup will check for presence of .NET framework (3.5 or higher) and SQL/SQL Desktop Engine installations, and will prompt the user in the case that those are not present.



Ordering information and Support

For pricing, please contact your 5nine Software reseller or submit a sales inquiry at www.5nine.com.

For technical support, please visit <http://www.5nine.com/support.aspx> or e-mail techsupport@5nine.com and our support representative will contact you promptly.

5nine Software

910 Foulk Road, Suite 201
Wilmington, Delaware 19803 USA
+ 1 732 614 1638
Sales@5nine.com
