



5nine V2V Easy Converter 1.0

Summary

Free, fast and easy-to-use VMware / Hyper-V Virtual Machines Conversion

[5nine V2V Easy Converter](#) performs fast and non-intrusive conversion and fixup of selected VMware Virtual Machines to Microsoft Hyper-V VMs with highest conversion success ratio. 5nine V2V Easy Converter can be used as a standalone tool on different versions of Microsoft Server, including Free Microsoft Hyper-V Server 2008 R2/SP1, Server 2008 Core, and does not require any additional software licenses.

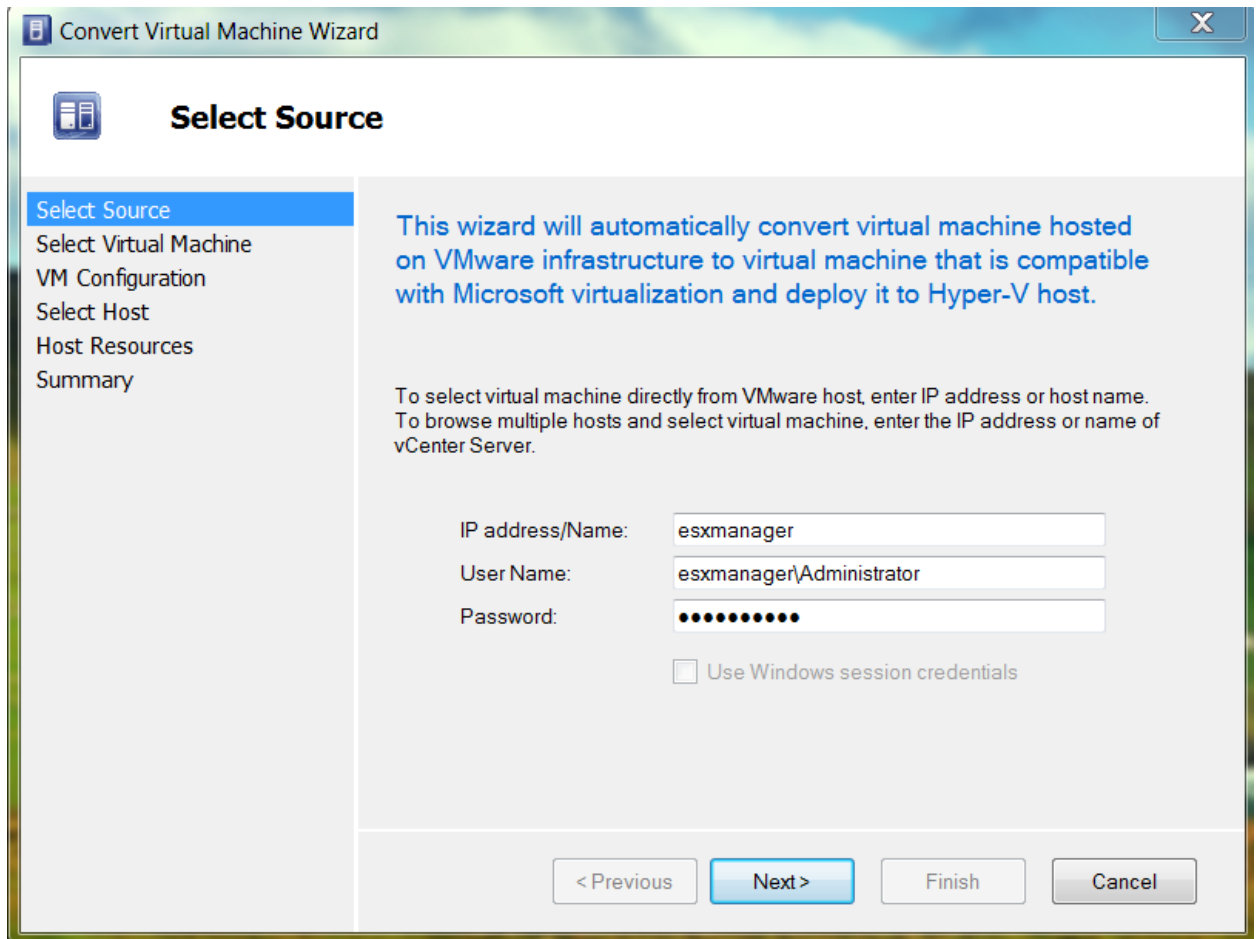
Main Features and Benefits:

- 5nine V2V Easy Converter is **a standalone tool and doesn't require any additional software licenses**; It runs on a Free Microsoft Hyper-V Server 2008 R2/SP1, and VMware guest(s) may be migrated on a free Hyper-V server. It also runs on other Microsoft platforms, including Windows7, 'Full' and 'Core' editions of Server 2008 R2/SP1.
- 5nine V2V Easy Converter **does not require 'removing' the guest from the source VMware environment prior to conversion**. Thus this version does not perform the 'online' conversion, but the downtime is much less than in case you need to store the guest in the library in order to migrate.
- 5nine V2V Conversion process is **fast, effective and easy to use**. Various performance tests show up to x10 higher conversion speed than other V2V utilities.
- 5nine V2V Converter supports migration of the guests with different configurations, including **large disk(s) and shared disks** – these scenarios are specifically prone to the errors that other tools suffer from.
- 5nine V2V Easy Converter allows to modify the target guest configuration parameters, although the source VM configuration is preserved by default.

Current version of 5nine V2V Converter supports conversion of Windows Server 2008, Windows 7, Server 2003 (x64 and x86), and most of Windows 2000 advanced Server configurations. Subsequent releases will support simultaneous conversions of multiple VMs, as well as 'reverse' Hyper-V - to - VMware VMs conversion and fixup.

Main Functional Areas:

- Acquiring VM configuration from vCenter/vSphere/ESX ;



The screenshot shows a Windows-style dialog box titled "Convert Virtual Machine Wizard". The main area is titled "Select Source". On the left, there is a vertical list of steps: "Select Source" (highlighted), "Select Virtual Machine", "VM Configuration", "Select Host", "Host Resources", and "Summary". The main content area contains the following text:

This wizard will automatically convert virtual machine hosted on VMware infrastructure to virtual machine that is compatible with Microsoft virtualization and deploy it to Hyper-V host.

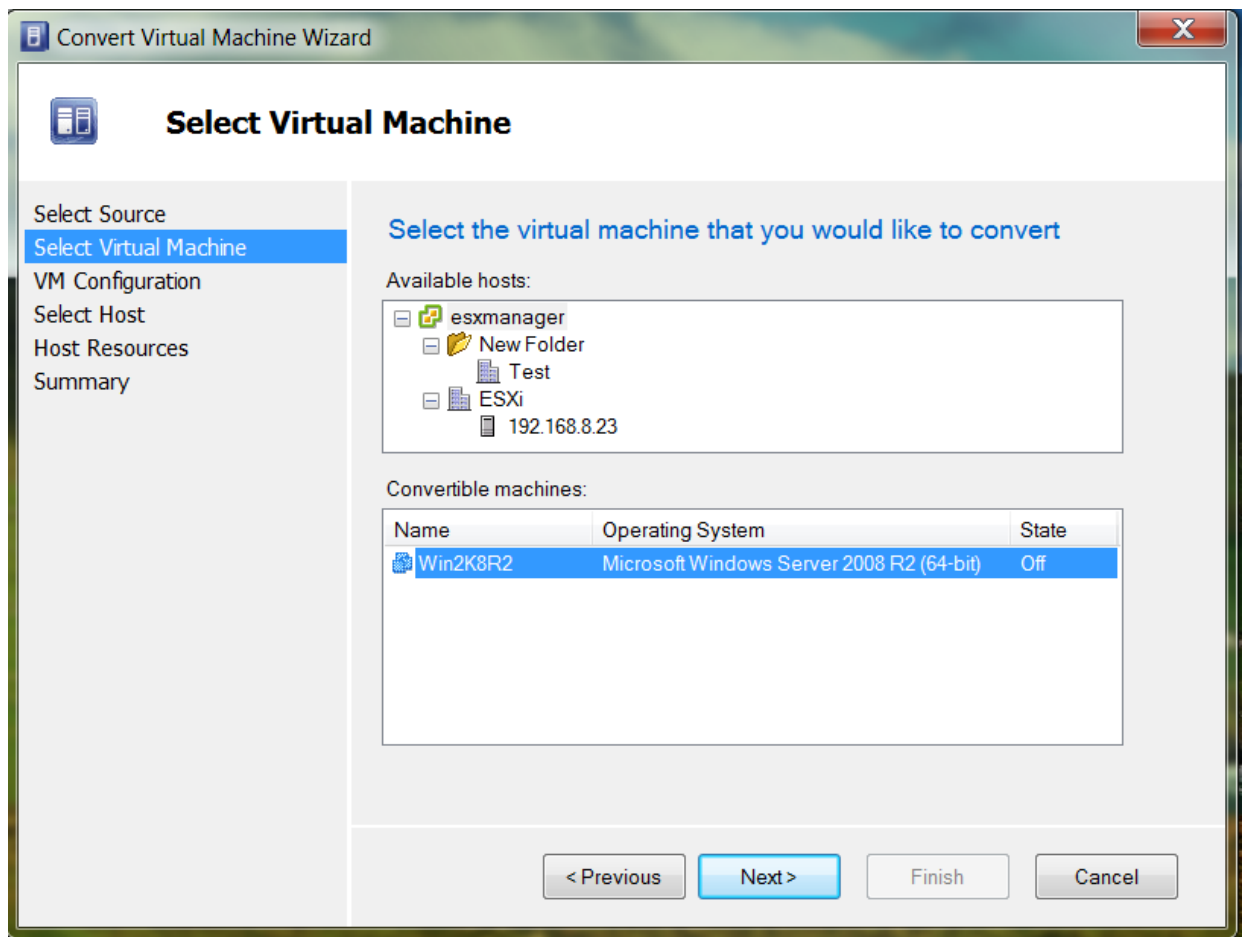
To select virtual machine directly from VMware host, enter IP address or host name.
To browse multiple hosts and select virtual machine, enter the IP address or name of vCenter Server.

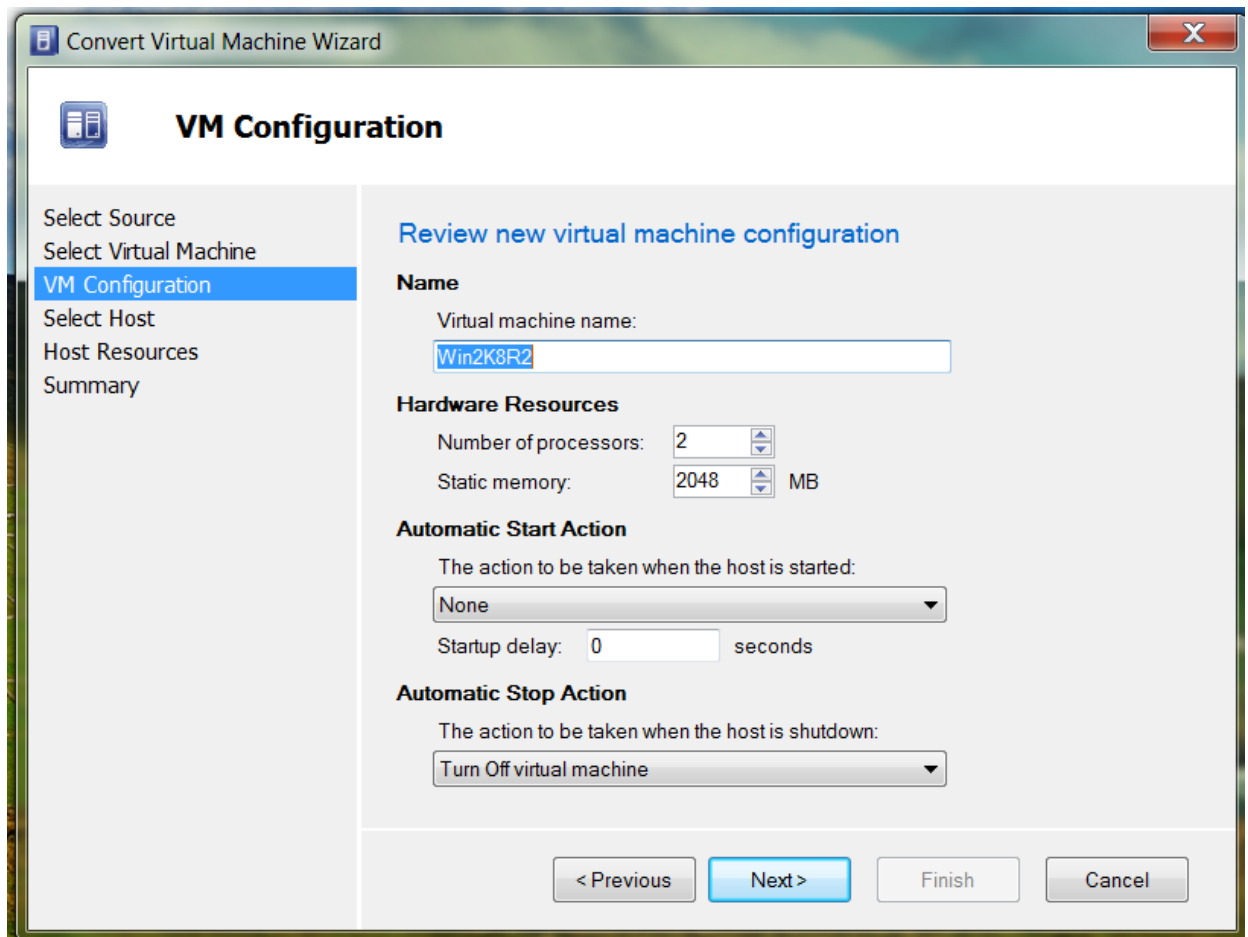
Below the text are three input fields:

- IP address/Name: esxmanager
- User Name: esxmanager\Administrator
- Password: [masked with 10 dots]

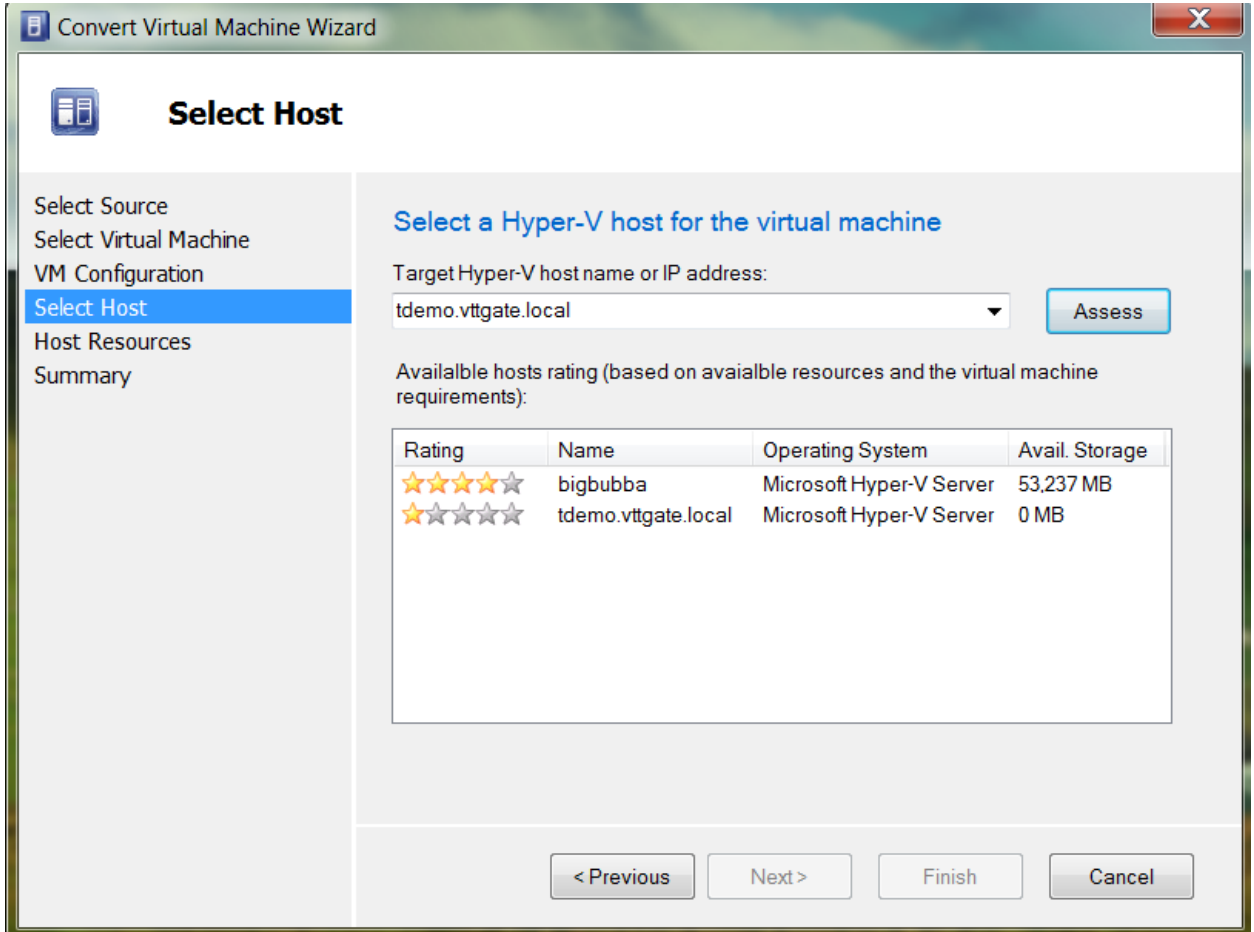
There is a checkbox labeled "Use Windows session credentials" which is currently unchecked.

At the bottom of the dialog, there are four buttons: "< Previous", "Next >" (highlighted in blue), "Finish", and "Cancel".

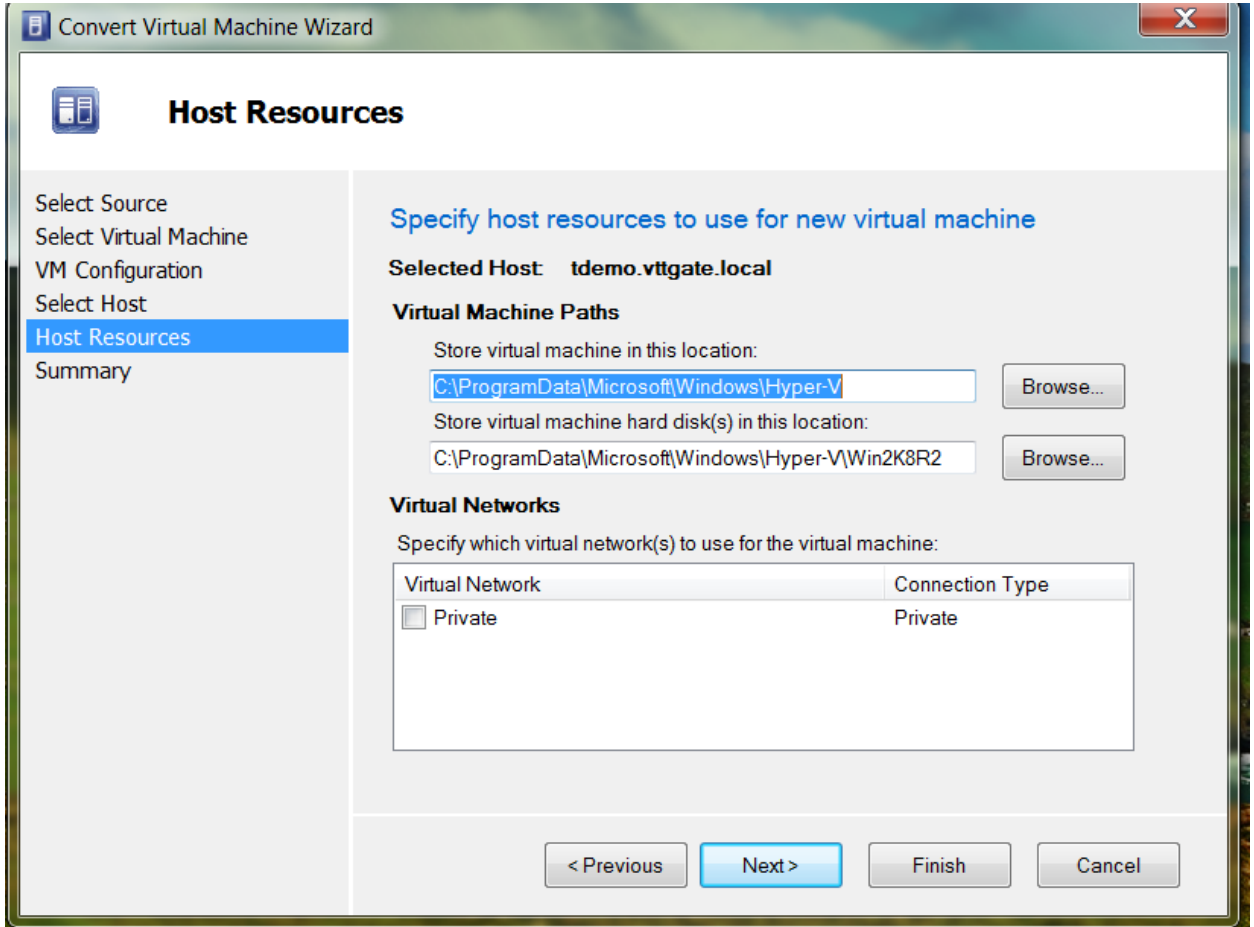


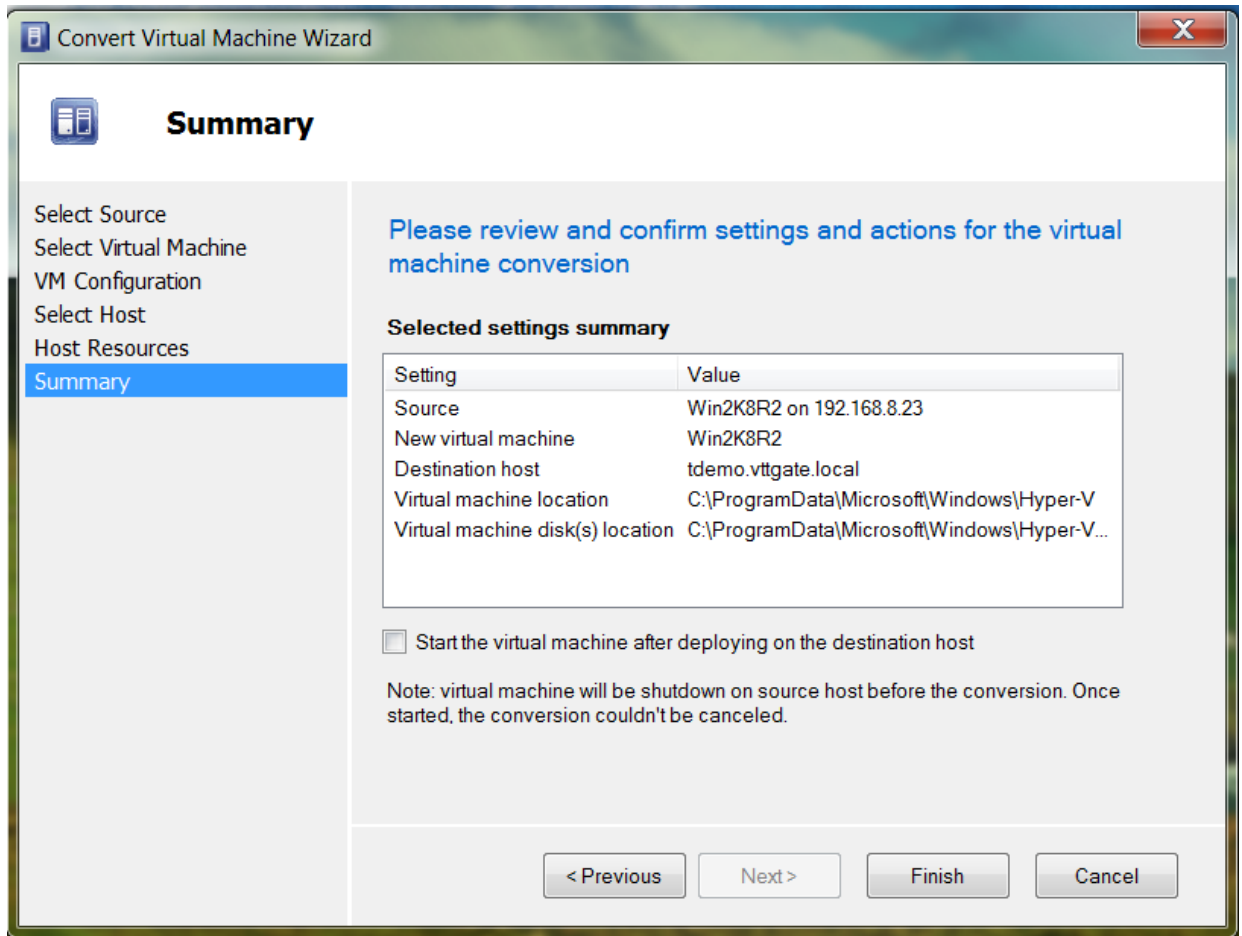


- VMDK to VHD conversion;
- Export of VMWare guest configuration to Hyper-V configuration;



- Configuration of Hyper-V Integration services for the guest





- Fixup/Startup of target Hyper-V guest.

Current Limitations:

- The conversion tool runs on Windows version 6.1 (Windows 7 on the client and Windows Server 2008 R2) or higher, x64. It will also run on core installations of Windows Server 2008 R2 and Hyper-V Server 2008 R2. It only has dependency on .NET runtime 3.5.1 (or higher) – this feature is available on mentioned target platforms out of the box and is enabled by the bootstrap setup program when required.
- Migration of guests running Windows NT 2000 and lower, Windows 9X, Linux and other OSs is not in the scope for pending release. Beta Preview supports migration of W2K8 Virtual Machines. Support of W2K3 is being added in subsequent release.
- We support conversions only from VMware environments running ESX and



vSphere/vCenter starting from version 3.5 and higher. Only VMware virtual machines versions 4 and 7 will be supported.

- We only support conversion to Hyper-V R2 on Windows Server 2008 as well as standalone Hyper-V Server 2008 R2. (Hyper-V V1 is not supported).
- VMware Integration services are not being always removed in Preview version before fixup of the VM on target Hyper-V host.

5nine V2V Easy Converter can be downloaded at www.5nine.com .